



Bob Lucas Memorial Library & Literacy Center Schematic Design

03/29/2022

Ad-Hoc Facilities Committee & Associates

- **Jason Capell** – Trustee, Committee Chair
- **Katie Clark** – Trustee
- **Nikki Winslow** – ALD Director
- **Jonathan Arevalo** – ALD Facilities Manager
- **Richard Ingrassia** – Rachlin Partners
- **Andrew Ulmen** – Rachlin Partners
- **Jennifer Pearson** – Rachlin Partners

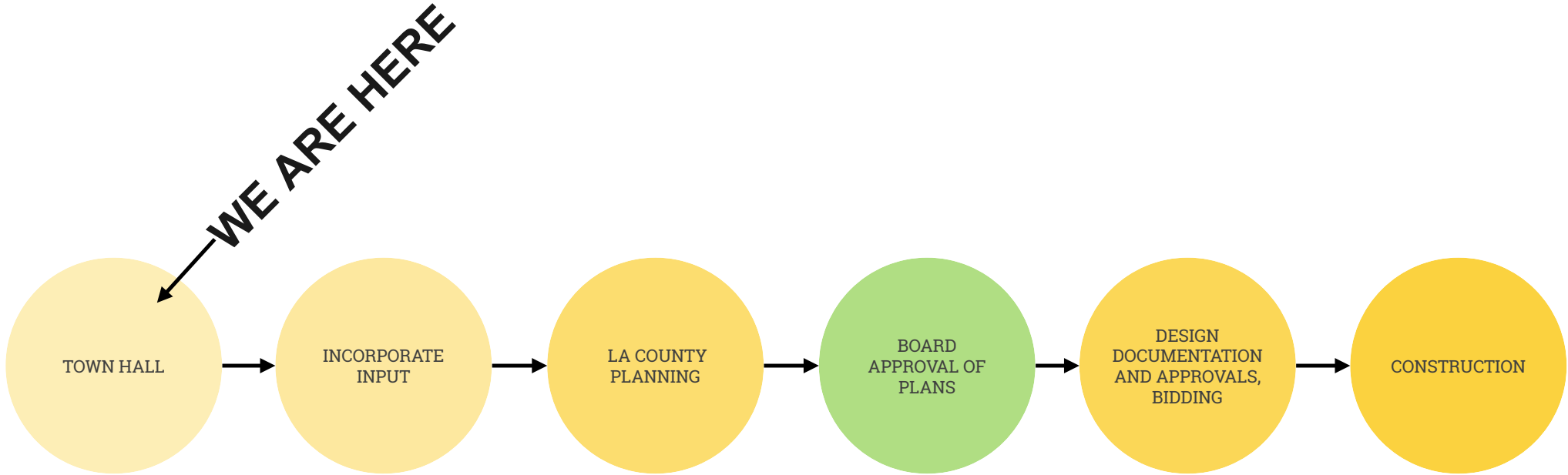
Anderson Brule Architects

- **Mark Schoeman** – Principal-In-Charge
- **Pamela Anderson-Brulé** – Library Programming
- **Angshupriya Pathak** – Lead Project Architect
- **Amy Crawford** – Lead Interior Designer
- **John LoCascio** – Historical Research Group

Community Focus Group

- • **Tom Ruffner** – Friends of the Altadena Library
- • **Bridget Brewster** – Altadena Library Foundation
- • **Veronica Jones** – Altadena Historical Society
- • **Rob Bruce** – Altadena Heritage
- • **Chris O'Malley** – Altadena Town Council
- • **Mylinh Hamlington** – Altadena Library Staff
- • **Diana Wong** – Bob Lucas Branch Manager
- • **Alan Peck** – Community At-Large
- • **Shawna Dawson Beer** – Community At-Large
- • **Tom Reilly** – Community At-Large

01 Engagement and Process



02 Next Steps

What is the experience of the library today?

Claustrophobic

Does a lot in little space

Parking is wasteful

Back entry needs to be more impressive. It is also a literacy center so that needs to have more intention and presence

What Are Your Expectations?

Make main entry more prominent

What is the experience of the library in the future?

Reading room expanded outdoors - Get more regular programming with flex space that could be outdoors

Distinguish from homes - dramatic color and interesting outdoors that draw folks in

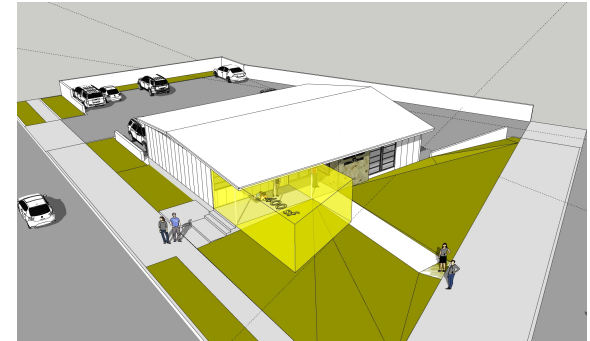
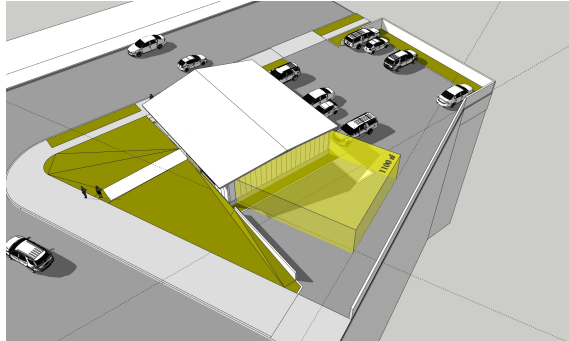
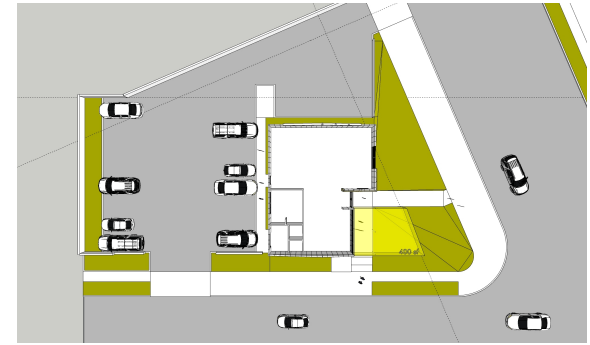
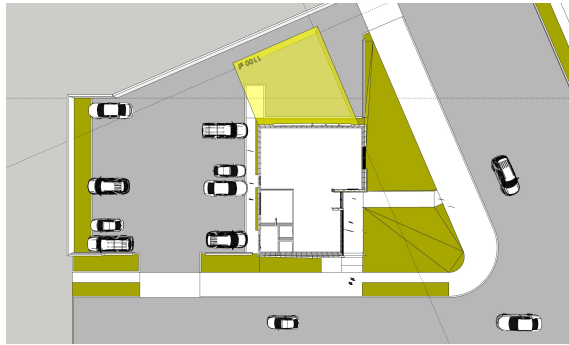
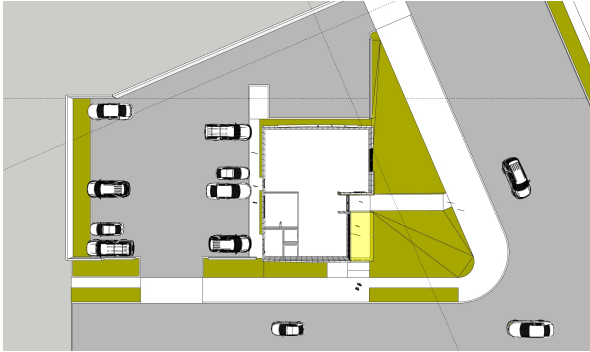
Create intentional space for literacy programs

Reduce parking

Would like to see interiors expanded to accommodate program.

Increase street visibility

03 What We Heard

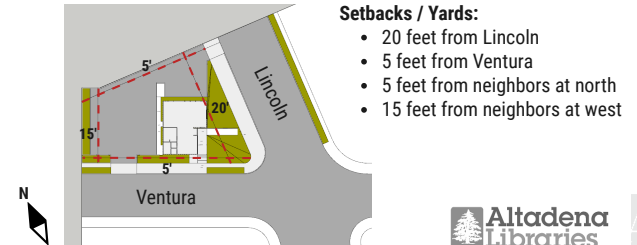


1

2

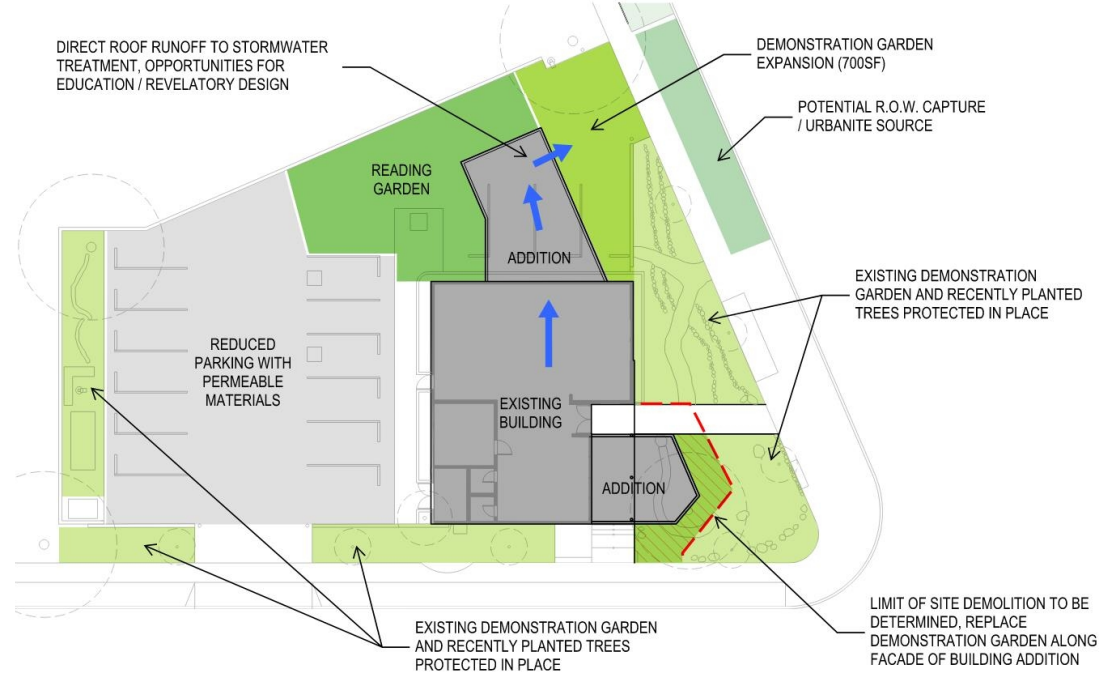
3

04 Expansion Ideas



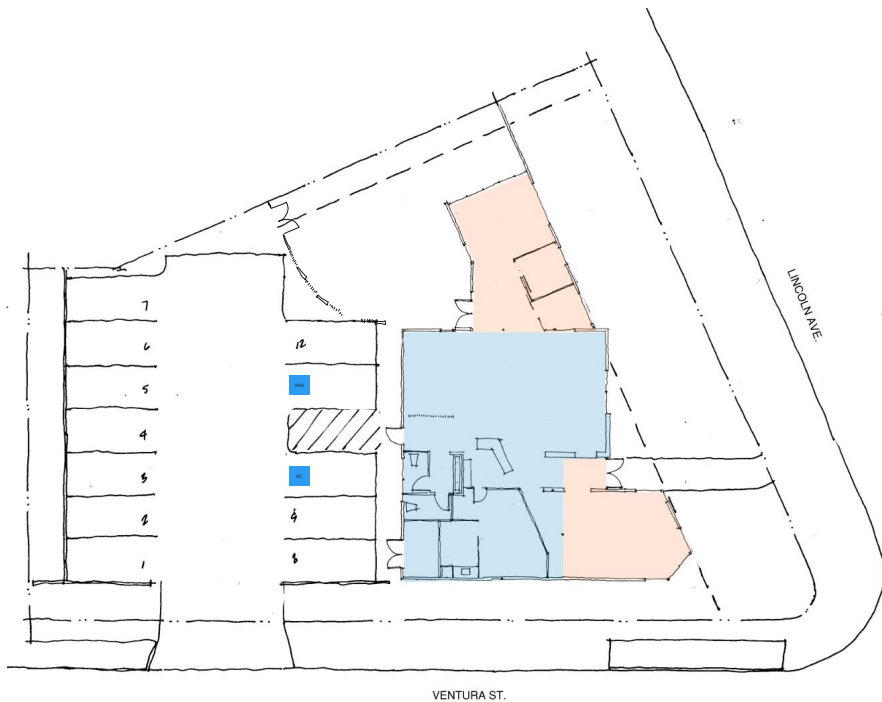


Existing Site



Proposed Site Concept

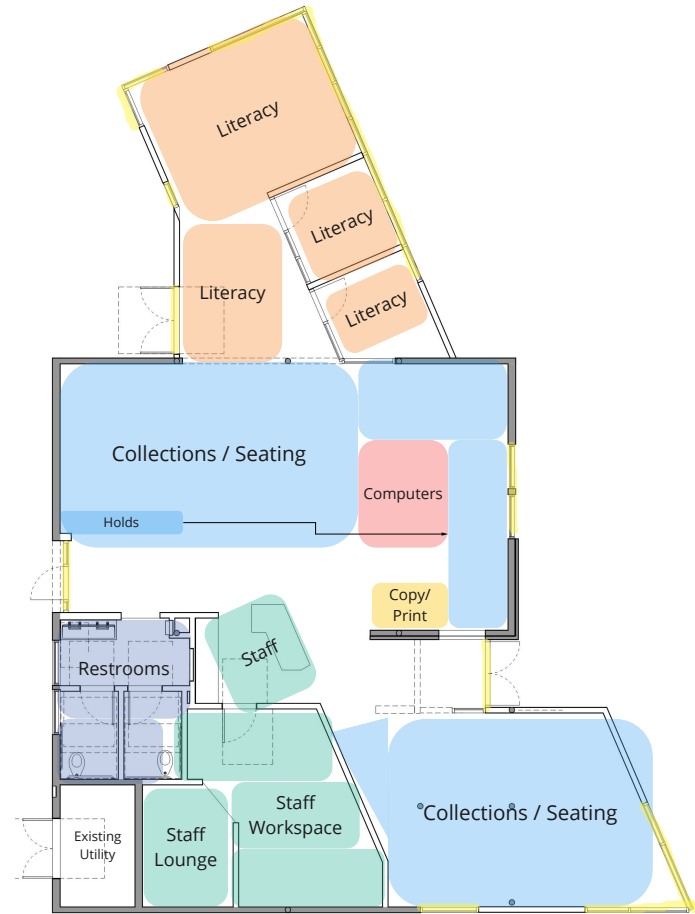
05 Site Concept



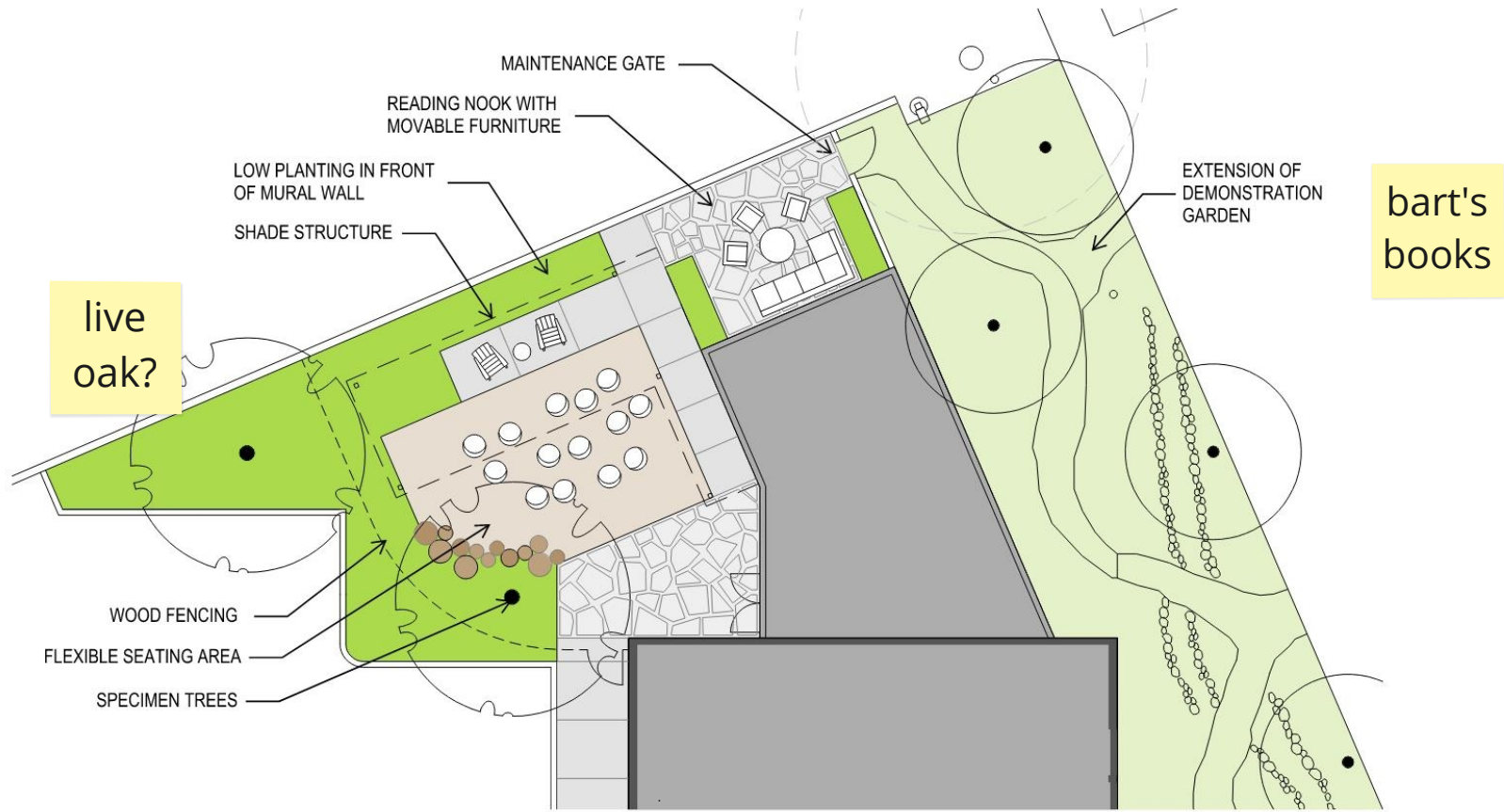
VENTURA ST.

LINDEN AVE.

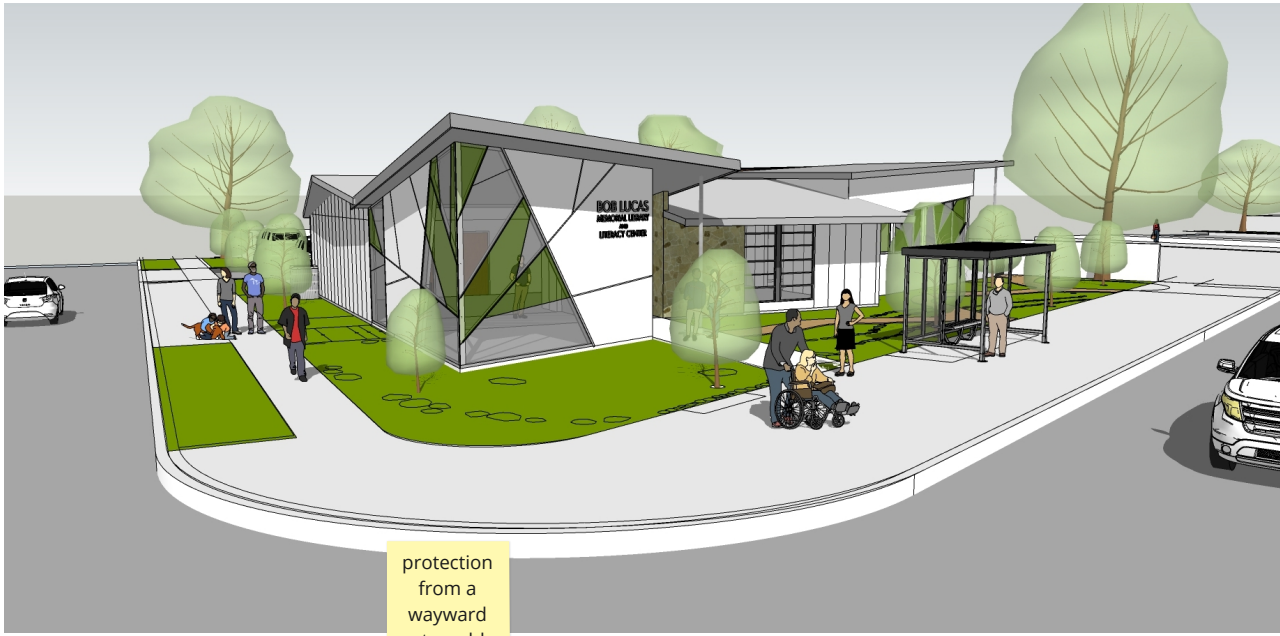
- EXISTING
- NEW



06 Site and Space Layouts



07 Site Concept - Reading Garden



protection
from a
wayward
automobile

incorporated
bench from
CT

parking walls as
murals? changable?
Elec charging station
for bikes
and cars



maybe not as
modern? does
not take in
account
Altadena history

solar
orientation

river rock,
craftsman
style

08 Perspective Views

Solar?
Absolutely!

can the branch
be a cooling
center?
e-power if grid
goes down?

furniture
layouts to
come in future
Town Hall
meetings

Carlotta and
Veronica like
the design

we have the
original plans,
donated to the
historic society

the Wall:
Very important
part of teh
history, needs
to be saved

Questions



grants to
refurbish
the wall?

additional
informational
signage?

would like to see the
roofs flow more
solar gain in the
summer, overhang?
Safety of the children?
Maybe the window be
a bit higher

expanding
hours @
Bob Lucas?

Discussion

thank you for a
thoughtful design-
is there anything
honoring Bob
Lucas?

protocol for
programming
suggestions

link for the
community for
feed back?

YES!



great design, expansion, literacy and
childrens area.
Push back on parking? there is a transit
stop. update of bike master plan...
Bike racks
Bus Shelter:
can we modify to a themed bus shelter?
northern landscape obscures the library
from the north

nice things, like the floor
plan
likes the angles
deeply disturbed by the
façades
take away from the disco
look.
Materiality? same angles

Who
Is
Bob
Lucas
?

09 Questions / Answers/ Discussion